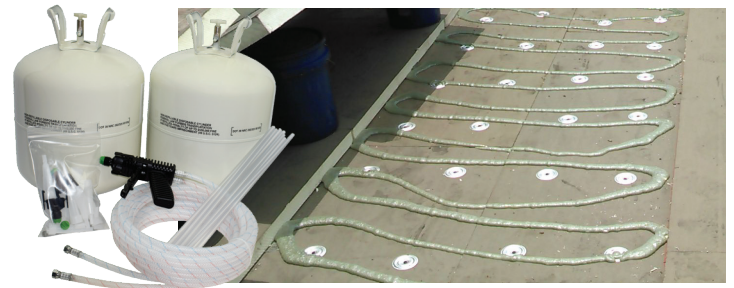




Uncompromising Quality in Commercial Roofing



PRODUCT DATA SHEET

ROOFING ADHESIVES

PRODUCT DESCRIPTION

Roofing Adhesive is a construction-grade, polyurethane foam adhesives designed to adhere to approved roof insulations, thermal barriers, cover boards and fleece backed membranes to acceptable substrates. It is available in cartridges and pressurized tanks.

PRODUCT FEATURES

- Clean, fast one-step application resulting in significant labor savings for the contractor.
- Full cure within minutes.
- No compressed or melted insulation.
- Remains flexible, absorbs stress.
- Superior wind-uplift resistance.
- Eliminates thermal bridging.
- One formula for insulation and fleece-back membrane attachment.
- Self-contained kit – comes with everything needed to apply adhesive.

CODE APPROVALS & LISTINGS



PRESSURE TANKS

Part No.	Description
TRUTRAPRTA50TS	Low-Rise Roofing Adhesive "A" Pressurized Tank (A includes: 25' Gun Hose Assembly, Wrench & 10 Long Cone Nozzles, Petroleum Jelly)
TRUTRAPRTB50TS	Low-Rise Roofing Adhesive "B" Pressurized Tank

CARTRIDGES

Part No.	Description
TRUTRACTR1500TS	Low-Rise Roofing Adhesive Cartridge (4) 1,500 ML Cartridge Box W/6 Static Mix Tips; 19 lbs/case – 54 cases/pallet

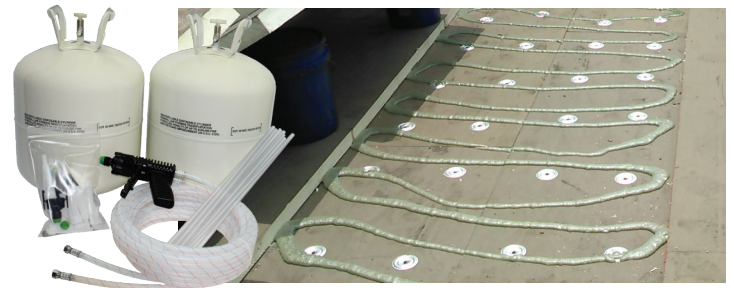
SRS Distribution

7440 S. Hwy 121
McKinney, TX 75070
srstopshield.com



Uncompromising Quality in Commercial Roofing

PRODUCT DATA SHEET

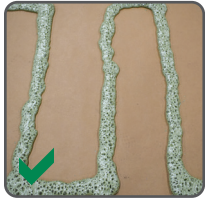


ROOFING ADHESIVES

GUIDELINES

PROPER RATIO

The adhesive must be dispensed in a 1:1 ratio.



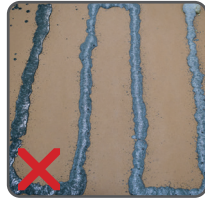
1:1 Ratio

Greyish green in color.
Low-rise, tacky foam
after cure.



A-Rich Ratio

Slow to rise/no
reaction. Yellow in color.
Brittle foam after cure.

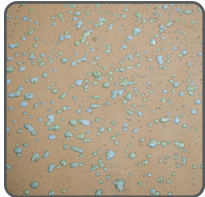


B-Rich Ratio

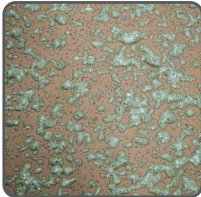
Very fast reaction/
skin over. Bluish grey
in color. Soft, flexible
foam after cure.

PROPER COVERAGE

Adhesive is applied in $\frac{3}{4}$ " wide beads or ribbons (applied using a straw attached to static mixer) spaced 4", 6", or 12" on center depending on the conditions of the project. Splatter pattern application, for fleece back membrane attachment, can be obtained by using the shower cap tip included in the pressurized tank sets. Good coverage recommendations are based on a typical application of 3 lbs. of adhesive applied per 100 square feet of area.



*Splatter Pattern
Light Coverage*



*Splatter Pattern
Good Coverage*

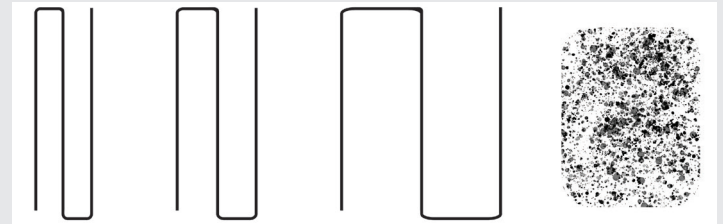


*Splatter Pattern
More Than
Enough Coverage*

ASPHALT AND ROOFING ADHESIVE

Roofing Adhesive does not stick to new, or previously unexposed, asphalt that has a shiny appearance. Whenever shiny asphalt is encountered, the asphalt must be primed prior to the installation of the adhesive.

Expected Yield per tank set



Ribbon Application			Splatter Application
4" on-center	6" on-center	12" on-center	3 lbs. of adhesive per 100 sq. ft. of area
1,000 sq. ft. coverage*	1,500 sq. ft. coverage*	3,000 sq. ft. coverage*	2,400 sq. ft. coverage*

*Coverage rates may vary based on factors such as substrate type, bead size, etc.

Proper Temperature

- Substrate and ambient temperature must be above 32°F
- Pressurized tank temperature must be between 70°F - 85°F
- Ideal storage temperature is between 60°F - 90°F

SRS Distribution

7440 S. Hwy 121
McKinney, TX 75070
srstopshield.com