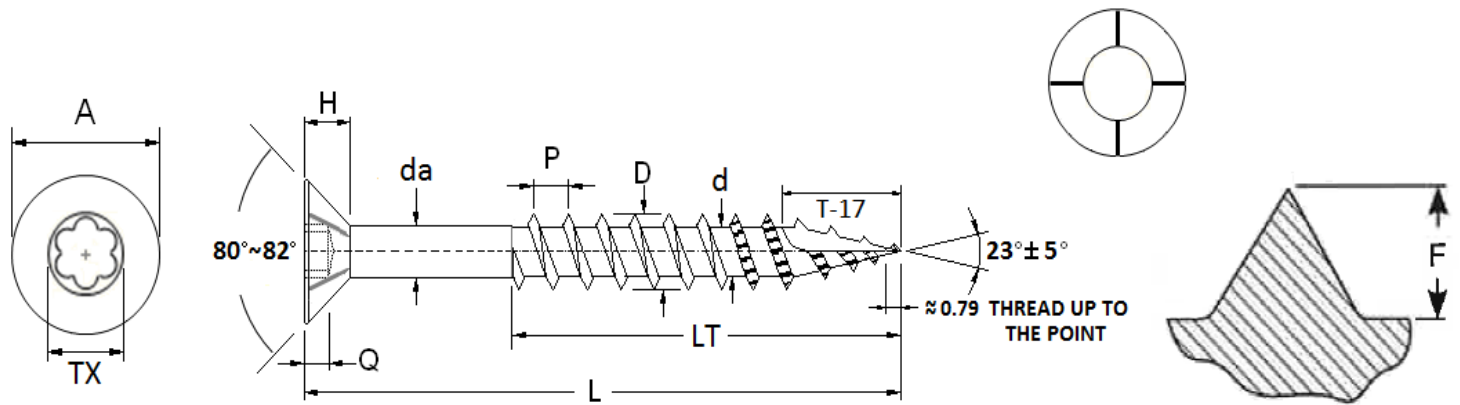


The information below lists the required dimensional, chemical and physical characteristics. If the order received does not meet the requirements; it may result in supplier corrective action, which would jeopardize your status as an approved vendor. Unless otherwise specified, all referenced consensus standards must be adhered to in their entirety.

Product drawing



The recess must be centered on the head.

Product sizing information (Unit : mm)

Standard: ASME B18.6.1 (Table: Dimensions of Threads and Body Diameters of Wood Screws)

Note: All dimensions are for the final product after the screws are galvanized and coated

Thread Size	Head Outer Diameter		Head Thickness	Body Diameter		Major Diameter		Minor Diameter		Thread Depth
	A		H	da		D		d		F
	Min	Max	Ref	Min	Max	Min	Max	Min	Max	
#8	7.75	8.12	3.30	3.17	3.45	4.35	4.70	2.80	3.05	1.5 min
#9	8.20	9.00	3.60	3.45	3.73	4.60	5.00	3.00	3.30	1.6 min
#10	8.76	9.50	3.90	3.70	3.98	5.03	5.30	3.33	3.55	1.7 min

Thread Size	Recess Type	Recess Depth		Point Type	Point Length	
	TX	Q			Min	Max
		Min	Max			
#8	T-20 Star	1.27	1.9	Type 17 Point	8.71	12
#9	T-25 Star	1.50	2.7	Type 17 Point	8.71	12
#10	T-25 Star	1.50	2.7	Type 17 Point	8.71	12

Nominal Length	Total Length		Thread Length		Pitch
	L		LT		P
	Min	Max	Min	Max	Ref
#8 X 1-1/4"	30.56	32.75	20.37	25	2.54
#8 X 1-5/8"	39.68	41.27	26.72	31	2.54
#8 X 1-3/4"	43.3	45.8	28.5	31.5	2.54
#8 X 2"	49.20	50.80	32.80	37	2.54
#9 X 2-1/2"	61.90	63.50	33	36	2.82
#9 X 3"	73.82	76.20	40	43	2.82
#10 X 3-1/2"	86.52	88.90	57.75	63	2.82
#10 X 4"	99.22	101.60	57.75	63	2.82
#10 X 5"	124.62	127.00	62	65	2.82
#10 X 6"	150.02	152.40	62	65	2.82



PRODUCT SPECIFICATIONS AND GUIDELINES
Pro – Deck Screws - Flat Head, 4 Lugs, Star Drive, T-17

Specification Requirements

Made to conform to **ASME B18.6.1** (Table: Dimensions of Threads and Body Diameters of Wood Screws)

Material: AISI C1022 Carbon Steel or equivalent

Breaking Torque:

#8	Min 35 kg-cm
#9	Min 45 kg-cm
#10	Min 55 kg-cm

Core Hardness: HRC 36- 45

Surface Hardness: HRC 45-62

Case Hardening Depth: 0.10 mm ~ 0.23 mm

Bending Angle: >15° minimum

Coating: Screws must have a coating in accordance to the requirements given below.

All screws must withstand the Minimum Hours in the Salt Spray Chamber. The Salt spray is test conducted as per ASTM B117 – 16. The coating must be compatible for use with all treated lumber.

Please refer the Supplier Quality Manual for sample size, test frequency and the pass/fail criteria.

Screw Grade	Hours in Salt Spray Chamber before failure	Coating Material
Pro	500 hours minimum	DACROMET or equivalent*
* Any equivalent coating must be approved by Huttig before shipment		